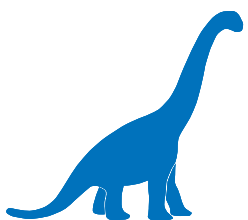


Söhlde | Lägerdorf | Rügen



Animal feed & feed additives

Productportfolio Animal Feed



PRODUCTION

Vereinigte Kreidewerke Dammann produces fine chalk, coarse chalk, and fertilizer limes in the three plants in Söhlde, Lägerdorf and Klementelwitz (on the island Rügen). The most advanced technology are used to fabricate qualities which suit a wide variety of applications. suit a wide variety of applications.



TRADE

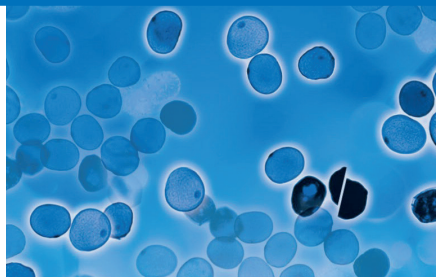
Vereinigte Kreidewerke Dammann has been actively trading in straight feedstuffs, additives and trace elements since 1964. With national and international partners, we give top priority not only to product safety and high product quality, but also to availability.



OBJECTIVE

We support our customers by providing technical advice in the use of our products - all the way from transportation through to storage, as well as professional processing.





Mineral feed & feed additives

Calcium - compounds

- Calcium carbonate - Vitacarb made of chalk different physical structures
- Calcium carbonate - various geological formations
- Calcium - magnesium carbonate (Dolomite)
- Calcium sulfate - Dihydrate

Phosphate - compounds Yeast cell wall

- Calcium - Sodium - Phosphate
- Dicalcium phosphate
- Monocalcium phosphate

Magnesium - compounds

- Magnesium oxide
- Magnesium sulfate - KaSaMag
- Magnesium - Keylated

Sodium - compounds

- Sodium chloride - feed salt
- Sodium chloride - feed salt (for organic farming)
- Sodium bicarbonate
- Sodium carbonate SAD or SAL - soda
- Mineral-, Herbs- and Salt lickstones

Yeast cell wall

- Fubon®

bulk bigbag bags drum box Packaging

	bulk	bigbag	bags	drum	box
Calcium carbonate - Vitacarb made of chalk different physical structures	●	●	●		
Calcium carbonate - various geological formations	●	●	●		
Calcium - magnesium carbonate (Dolomite)	●	●	●		
Calcium sulfate - Dihydrate	●	●	●		
Phosphate - compounds					
Calcium - Sodium - Phosphate	●	●	●		
Dicalcium phosphate	●	●	●		
Monocalcium phosphate	●	●	●		
Magnesium - compounds					
Magnesium oxide	●	●	●		
Magnesium sulfate - KaSaMag	●	●	●		
Magnesium - Keylated			●		
Sodium - compounds					
Sodium chloride - feed salt	●	●	●		
Sodium chloride - feed salt (for organic farming)	●	●	●		
Sodium bicarbonate	●	●	●		
Sodium carbonate SAD or SAL - soda	●	●	●		
Mineral-, Herbs- and Salt lickstones					
Yeast cell wall					
Fubon®		●	●		



Feed additives

Iron - compounds

	bulk	bigbag	bags	drum	box	Packaging
Iron sulfate, monohydrate	●	●	●			
Iron - Glycinate			●			
Iron - Keylated			●			

Iodine - compounds

Calcium iodine, anhydrate			●			
Iodine premix			●			

Cobalt - compounds

Cobalt carbonate			●			
Cobalt sulfate, heptahydrate			●			
Cobalt premix			●			

Copper - compounds

Copper oxide			●			
Copper - Glycinate			●			
Copper - Keylated			●			

Manganese - compounds

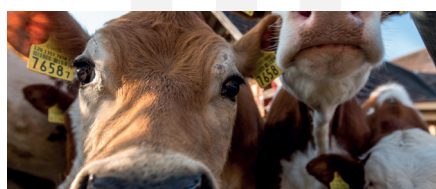
Manganese oxide		●	●			
Manganese sulfate, monohydrate		●	●			
Manganese - Glycinate			●			
Manganese - Keylated			●			

Zinc - compounds

Zinc oxide	●	●	●			
Zinc sulfate, monohydrate		●	●			
Zinc - Glycinate			●			
Zinc - Keylated			●			

Selenium - compounds

Sodium selenium					●	
Selenium premix			●			





Feed additives & specialities

Anti caking agents and binders

Bentonite - Montmorillonite

● ● ●

Zeolite - Clinoptilolite
different physical structures

● ● ●

Urea

Urea

● ● ●

Rumen buffer

OmyaFeed C MgO[®]

● ● ●

bulk

bigbag

bags

drum

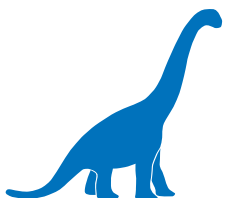
box

Packaging





Plant Söhle



Vereinigte Kreidewerke Dammann GmbH & Co. KG

Hildesheimer Straße 3 | 31185 Söhle | Germany

Tel. +49 5129 78-0 | Fax +49 5129 78-1200 | info@dammann.de

www.dammann.de

